

Algebra I

5.6 Worksheet

Domains of Piecewise Functions

NAME: _____

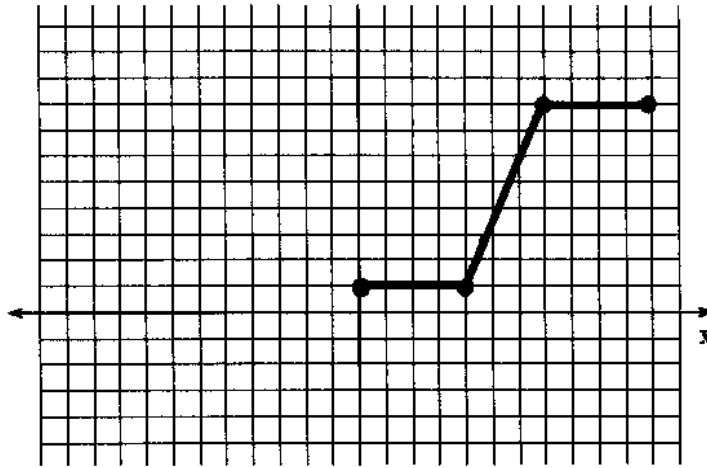
DATE: _____ HOUR: _____

Identify the domain of each piecewise function shown.

1. $\underline{\quad} \leq x \leq \underline{\quad}$

$\underline{\quad} \leq x \leq \underline{\quad}$

$\underline{\quad} \leq x \leq \underline{\quad}$

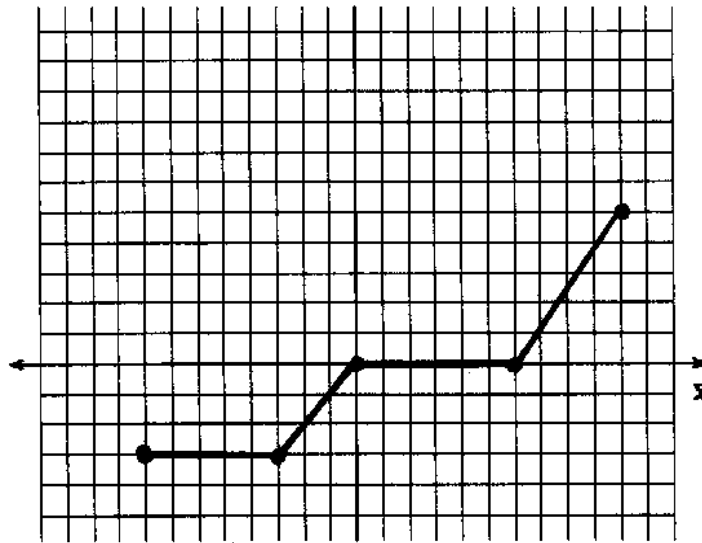


2. $\underline{\quad} \leq x \leq \underline{\quad}$

$\underline{\quad} \leq x \leq \underline{\quad}$

$\underline{\quad} \leq x \leq \underline{\quad}$

$\underline{\quad} \leq x \leq \underline{\quad}$

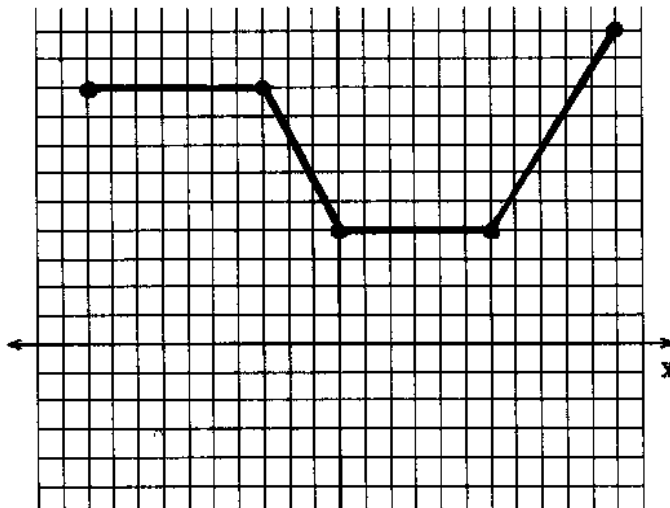


3. $\underline{\quad} \leq x \leq \underline{\quad}$

$\underline{\quad} \leq x \leq \underline{\quad}$

$\underline{\quad} \leq x \leq \underline{\quad}$

$\underline{\quad} \leq x \leq \underline{\quad}$

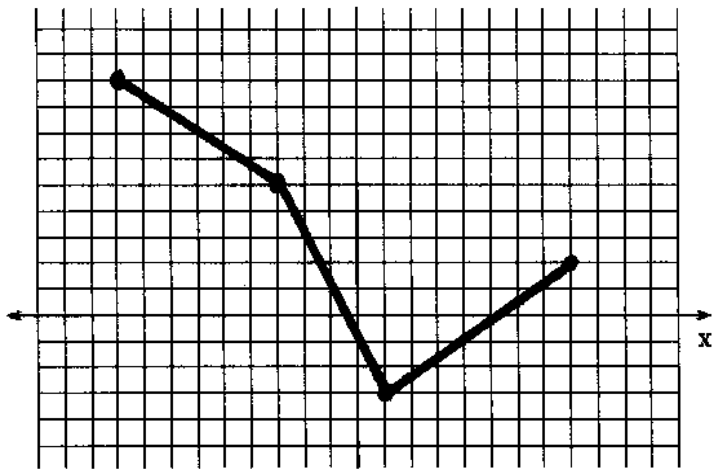


4.

_____ $\leq x \leq$ _____

_____ $\leq x \leq$ _____

_____ $\leq x \leq$ _____

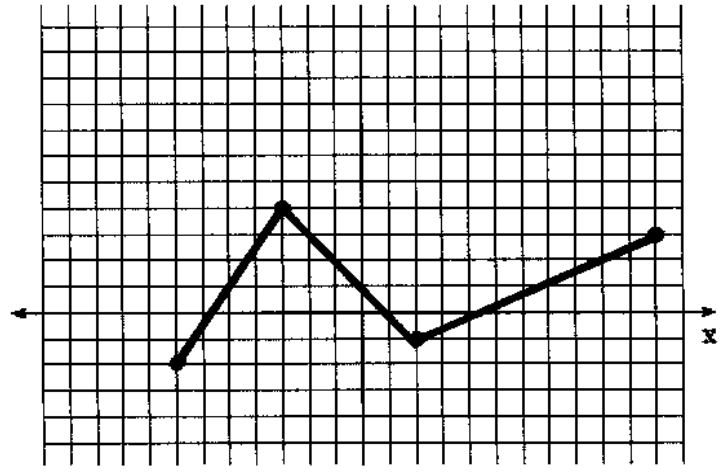


5.

_____ $\leq x \leq$ _____

_____ $\leq x \leq$ _____

_____ $\leq x \leq$ _____



6.

_____ $\leq x \leq$ _____

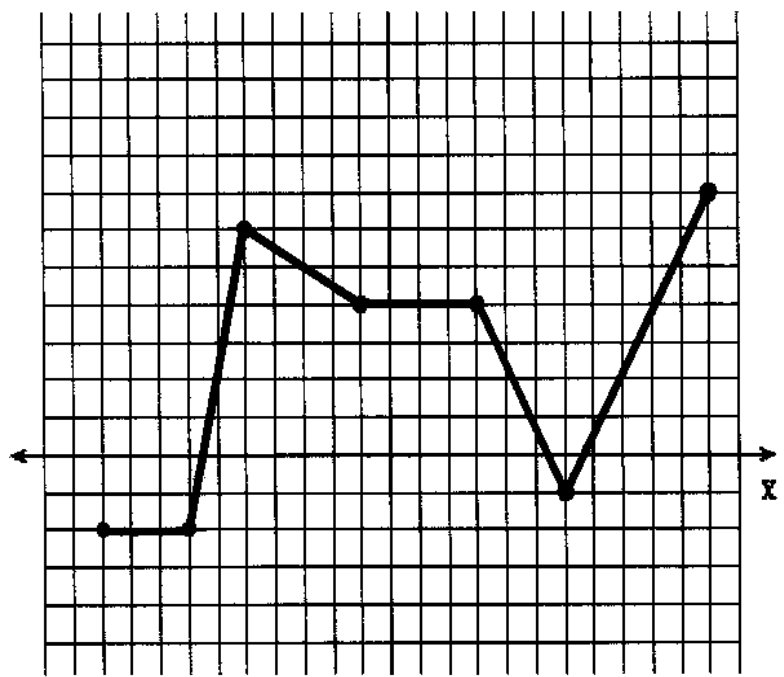
_____ $\leq x \leq$ _____

_____ $\leq x \leq$ _____

_____ $\leq x \leq$ _____

_____ $\leq x \leq$ _____

_____ $\leq x \leq$ _____



Algebra I

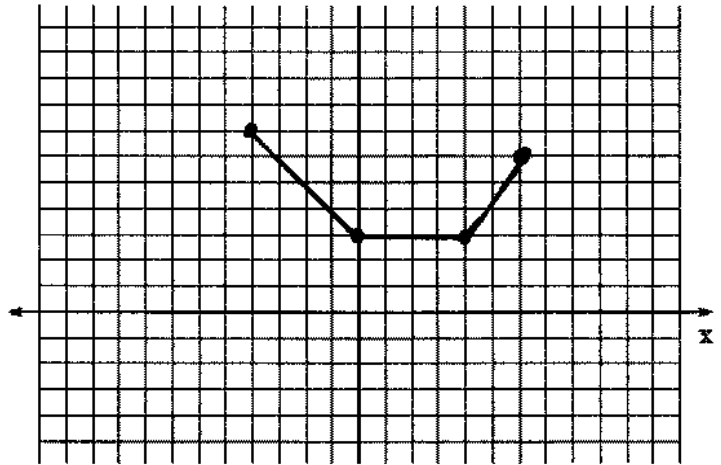
5.6 Practice

Definitions of Piecewise Functions

Define each piecewise function.

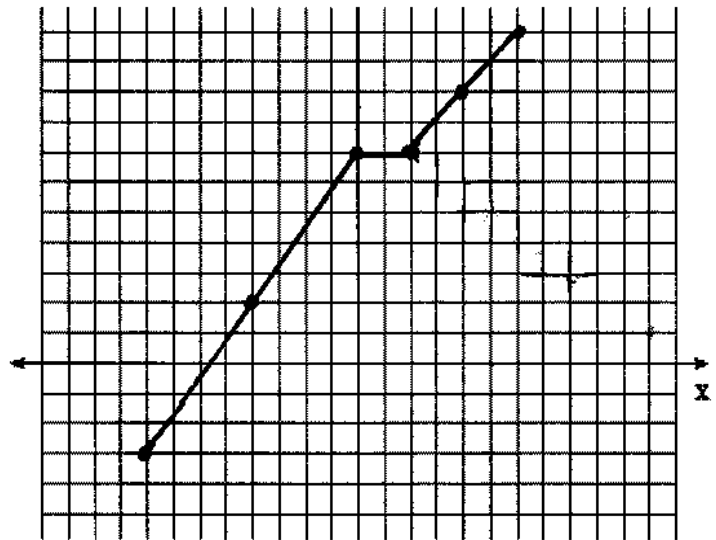
1.

$$f(x) = \begin{cases} \text{_____}, & \text{_____} \leq x \leq \text{_____} \\ \text{_____}, & \text{_____} \leq x \leq \text{_____} \\ \text{_____}, & \text{_____} \leq x \leq \text{_____} \end{cases}$$



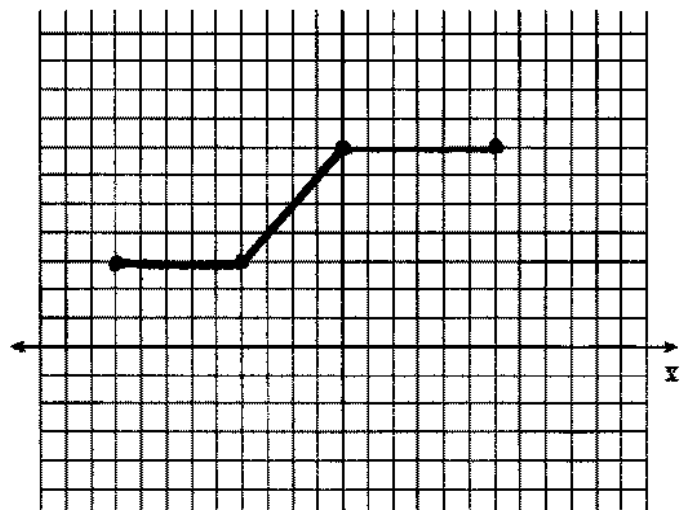
2.

$$f(x) = \begin{cases} \text{_____}, & \text{_____} \leq x \leq \text{_____} \\ \text{_____}, & \text{_____} \leq x \leq \text{_____} \\ \text{_____}, & \text{_____} \leq x \leq \text{_____} \end{cases}$$



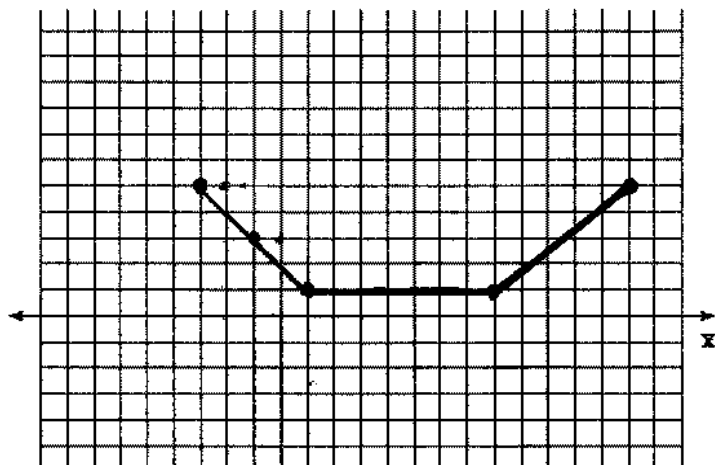
3.

$$f(x) = \begin{cases} \text{_____}, & \text{_____} \leq x \leq \text{_____} \\ \text{_____}, & \text{_____} \leq x \leq \text{_____} \\ \text{_____}, & \text{_____} \leq x \leq \text{_____} \end{cases}$$



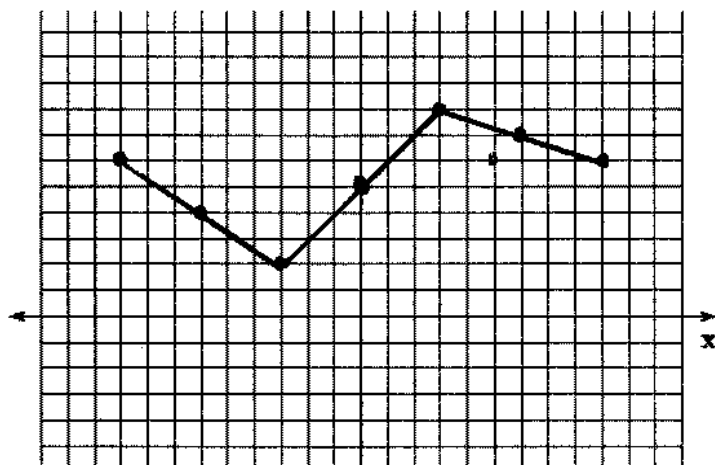
4.

$$f(x) = \begin{cases} \text{_____} & \leq x \leq \text{_____} \\ \text{_____} & \leq x \leq \text{_____} \\ \text{_____} & \leq x \leq \text{_____} \end{cases}$$



5.

$$f(x) = \begin{cases} \text{_____} & \leq x \leq \text{_____} \\ \text{_____} & \leq x \leq \text{_____} \\ \text{_____} & \leq x \leq \text{_____} \end{cases}$$



6.

$$f(x) = \begin{cases} \text{_____} & \leq x \leq \text{_____} \\ \text{_____} & \leq x \leq \text{_____} \\ \text{_____} & \leq x \leq \text{_____} \\ \text{_____} & \leq x \leq \text{_____} \end{cases}$$

